

MAIN FLOOR

5345 ASPEN DRIVE, WEST VANCOUVER

TOTALS*		OTHER AREAS:
Main Floor (finished):	1,391 sq.ft.	Garage: 415 sq.ft.
Upper Level (finished):	1,172 sq.ft.	Patio: 315 sq.ft.
TOTAL FINISHED:	2,563 sq.ft.	
Upper Level (unfinished)**:	48 sq.ft.	
GRAND TOTAL**:	2,611 sq.ft.	

** Does not include low ceiling area of 9 sq.ft.

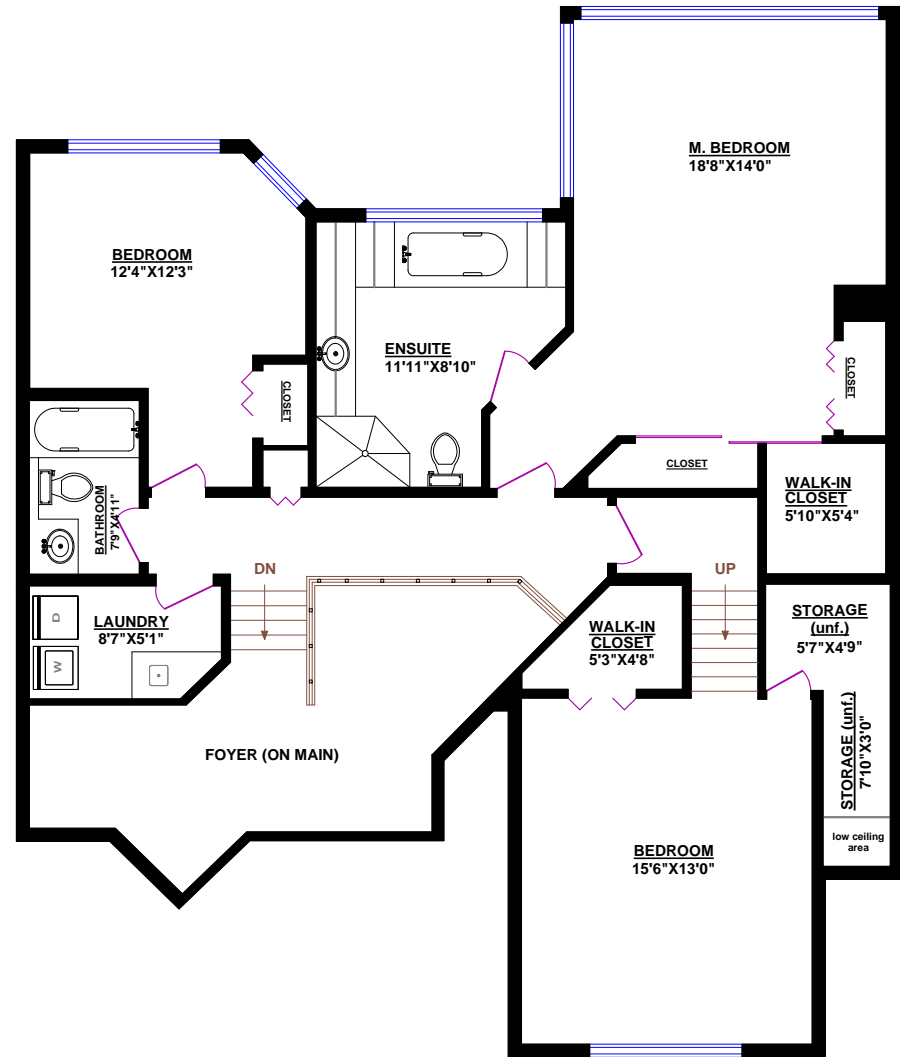
* Measured to exterior of walls and to the middle of the common walls
* These measurements are not taken from the Strata Plan.



SAM McCALL
RE/MAX MASTERS REALTY



200 - 1455 Bellevue Avenue
West Vancouver, BC V7T 1C3
phone: (604) 913-9000
www.sammccall.ca



UPPER LEVEL

