

SAM McCALL

Sam McCall Personal Real Estate Corp.



200 - 1455 Bellevue Avenue
West Vancouver, BC V7T 1C3
phone: (604) 913-9000
www.sammccall.ca



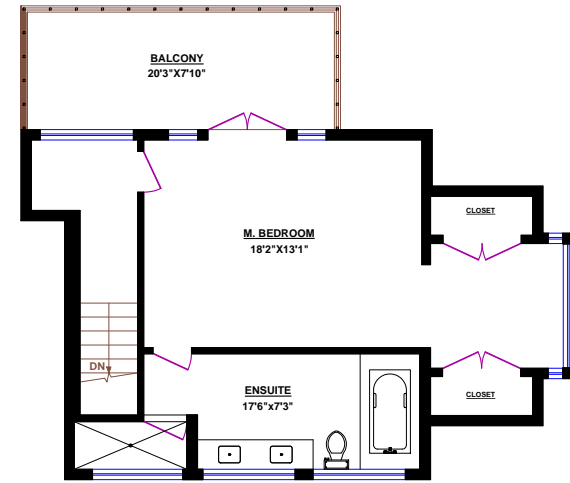
2288 BOULDER CT, WEST VANCOUVER

TOTALS

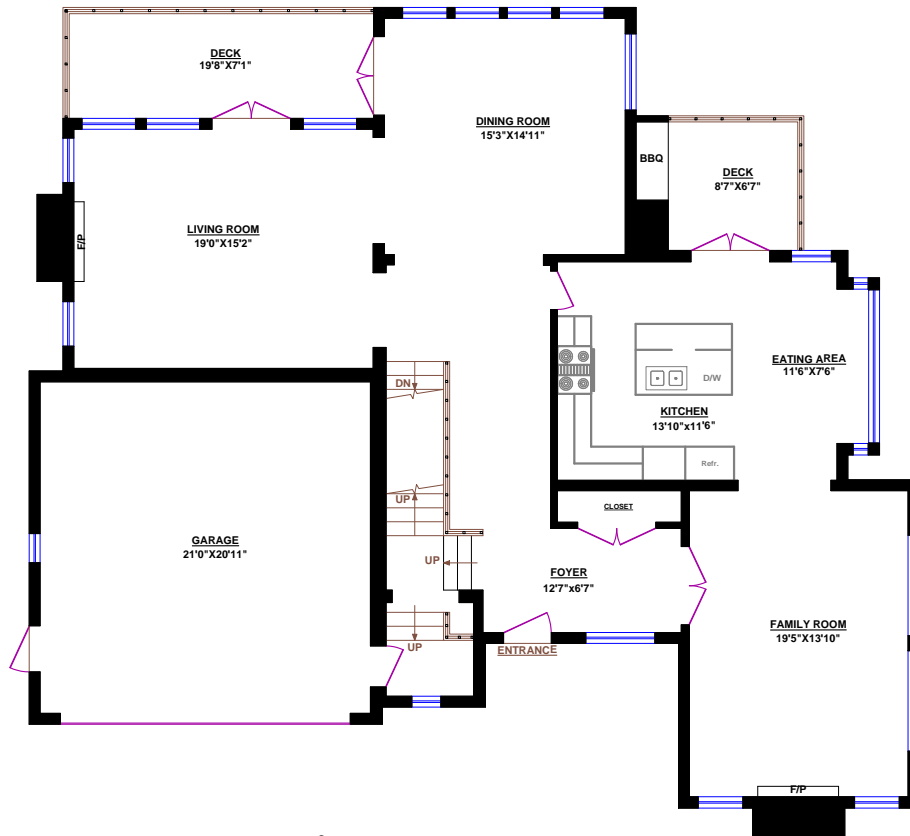
Main Floor (finished): 1,594 sq.ft.
Upper Level (finished): 657 sq.ft.
Lower Level (finished): 1,582 sq.ft.
TOTAL FINISHED: 3,833 sq.ft.
TOTAL UNFINISHED: 0 sq.ft.
GRAND TOTAL: 3,833 sq.ft.

OTHER AREAS:

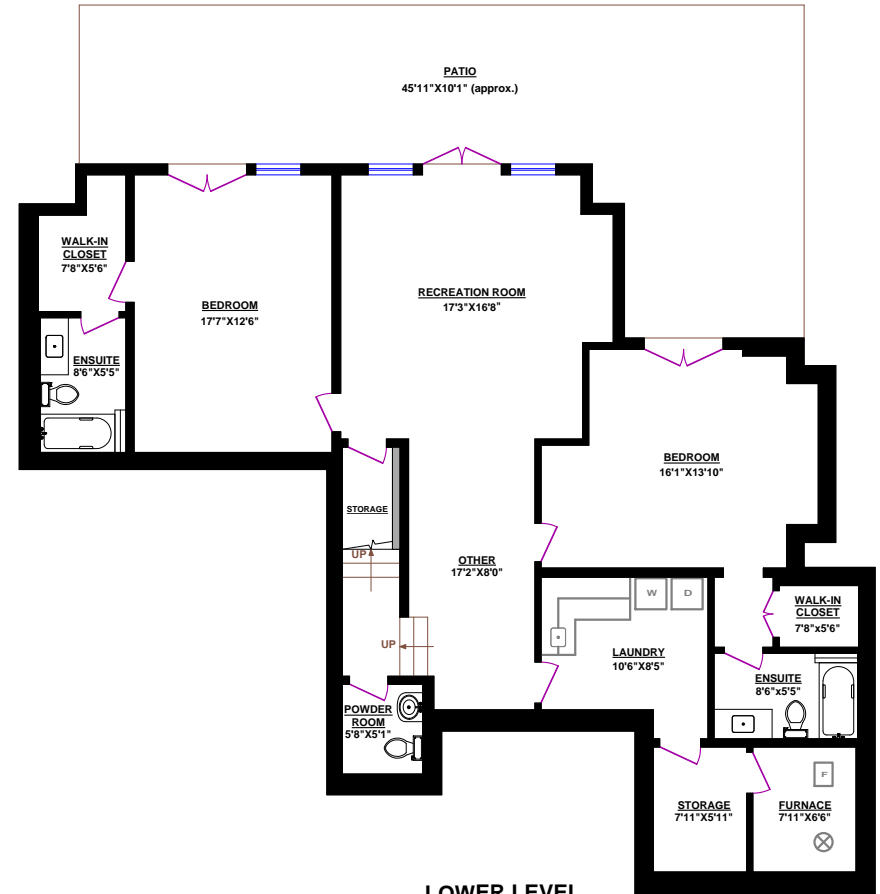
Garage: 471 sq.ft.
Deck: 138 sq.ft.
Deck: 73 sq.ft.
Balcony: 159 sq.ft.
Patio: 463 sq.ft.



UPPER LEVEL



MAIN FLOOR



LOWER LEVEL

