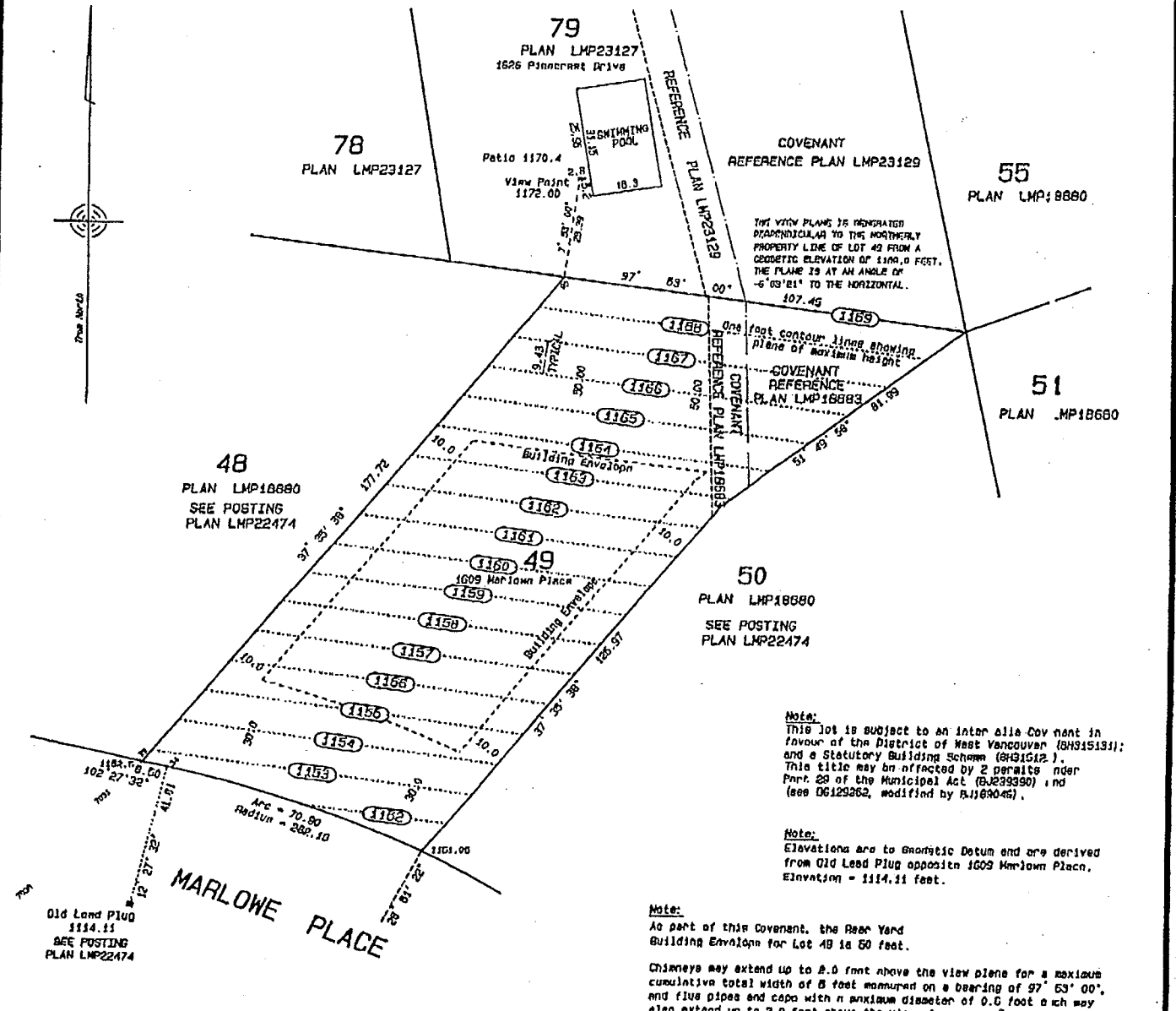


SCHEDULE "A"

SKETCH TO ACCOMPANY A RESTRICTIVE COVENANT ON
 LOT 49
DISTRICT LOT 1104
 GROUP ONE, NEW WESTMINSTER DISTRICT
 PLAN LMP18680
 SCALE: 20 FEET TO 1 INCH



Certified Correct according to
 Plan LMP18680:

----- B.C.L.S.
 this 12th day of March, 2008.

Note:
 This lot is subject to an Inter alia Covenant in favour of the District of West Vancouver (B9315131) and a Statutory Building Scheme (B931512). This title may be affected by 2 permits under Part 28 of the Municipal Act (B9233390) and (see D6129262, modified by B1183046).

Note:
 Elevations are to Geodetic Datum and are derived from Old Lead Plug opposite 1609 Marlowe Place. Elevation = 1114.11 feet.

Note:
 As part of this Covenant, the Rear Yard Building Envelope for Lot 49 is 50 feet.

Chimneys may extend up to 2.0 feet above the view plane for a maximum cumulative total width of 8 feet measured on a bearing of 97° 53' 00", and five pipes and caps with a maximum diameter of 0.6 feet each may also extend up to 2.0 feet above the view plane.

© CHAPMAN LAND SURVEYING LTD. 2000
 British Columbia Land Surveyors
 107-100 Park Royal South
 WEST VANCOUVER, B.C.
 V7T 1A2 604-926-7111
 FAX 604-926-8921

D6 JOB: 00203A FILE: 1172 CORR: 173-49.COR

END OF DOCUMENT